

We drive your ideas.



We put your mechanics  
into motion

1+

Automation from quantity 1



Everything you need  
turnkey ready

Automation  
Motion  
Controller

# Control Automate Implement

---

## 40 Years of Experience

With over 40 years of experience, sm motion control is a proven partner for control, automation, and drive technology.

sm motion control gmbh is a manufacturer of electronic controllers used as continuous path control systems, positioning control systems, compact control units, and all-in-one controllers. Thanks to our innovative range of controllers, we can configure complex industrial automated systems, including drive technology and mechanical systems.

---

## Expertise

- Development and manufacturing of electronic control systems
- Designing of control and drive systems
- Electrical engineering, manufacturing of control cabinets
- Software development and commissioning
- Configuration of complete positioning systems
- Development and production of customised electronic devices and components
- Retrofit of machinery
- Special machinery

---

## Tradition

Tradition, reliability and trust are the cornerstones of our business.

We cultivate long-standing partnerships with our customers and work with them closely. As a result, our customers often use multiple generations of control systems simultaneously.

# smmx – The Automation Controller

Four control functions combined into one device:

CNC – PLC – Motion Control – Visualisation



## Features

Automation controller for CNC, PLC, Motion Control and Visualisation  
High-performance, modular, scalable, advanced development system (CODESYS V3)

## CNC

Continuous path control for up to 16 stepper or servo axes  
Linear, circular and helix interpolation  
8 independent CNC channels  
Programming according to DIN 66025

## PLC

CODESYS V3  
including function blocks for motion control

## Visualisation

CODESYS V3  
- Target visualisation for 5" – 15" colour touch panels  
- WEB visualisation for remote PC

## Operationsystem

Real-time Linux

## Interfaces

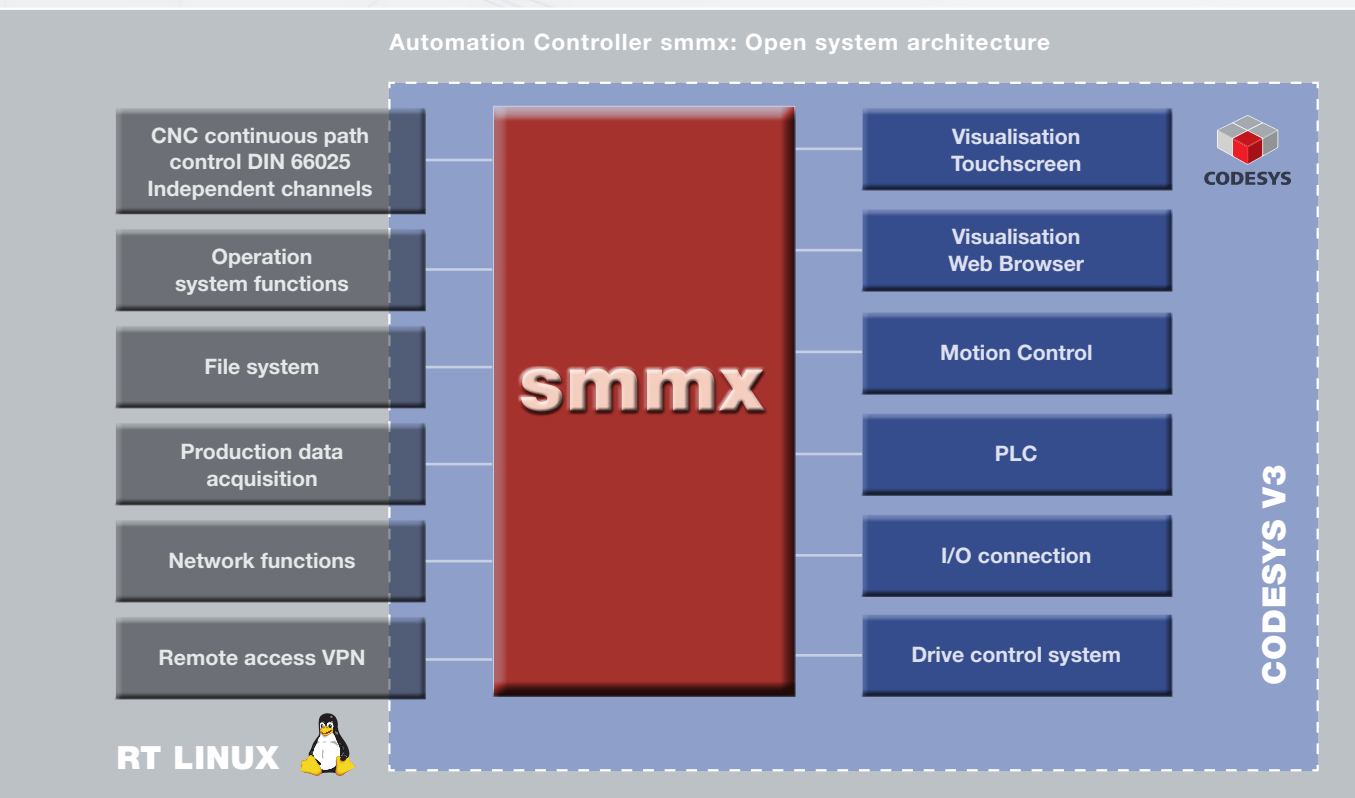
2x Ethernet 10/100 MBit, 2x RS232, 2x CAN, 2x USB  
EtherCAT, CANopen

## Remote Access

Service functions for setup and operation:  
Web, FTP, ssh, OPC-UA, Modbus TCP

# smmx – Open Platform

The open automation platform enables the user to integrate their own machine know-how. CNC programs in DIN66025-language (G-/M-commands) can run on multiple independent channels. PLC, motion control and visualisation functions are programmed using CODESYS V3. The smmx Controller can be used for touch panel and WEB visualisation. Former known approach with separate devices, controller and operator panel, is now obsolete.



## Other highlights

- Scalable configuration of machine applications
- Shared variable space for CNC, PLC and visualisation
- User administration
- Signal management
- Application update via USB stick
- Configuration via initialisation files

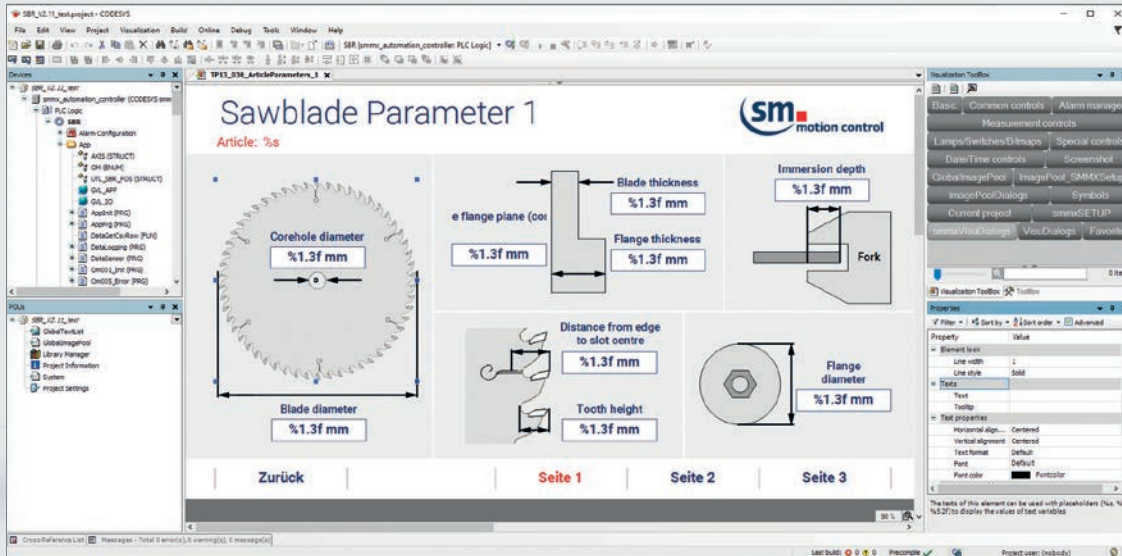


# smmx – CODESYS integrated



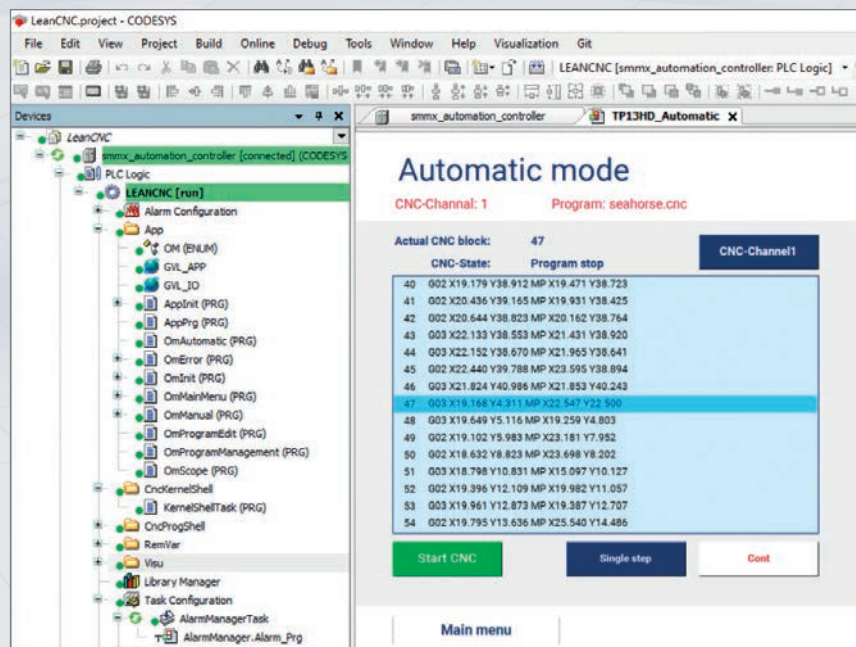
The Automation Controller smmx is configured with the CODESYS V3 object-oriented development system. Complete control, automation and visualization tasks can be implemented within a single configuration tool.

smmx



Sample project in the CODESYS development environment

Ready-to-use  
CODESYS templates  
for all automation  
tasks are available  
for the smmx  
controller platform



# smmx – Actual models

The Automation Controller smmx is currently available in the following models:

## smmx.box

smmx as compact DIN rail module

- Dimensions 46 x 130 x 84 mm
- Power supply 24 VDC
- Visualisation of the application in the WEB browser



## smmx.tp5

smmx with integrated 5.7" colour touch panel

- Resolution 640 x 480 px
- Display area 115 x 86 mm
- Capacitive touchscreen
- Aluminium housing with all-glass front for front panel mounting
- Dimensions 160 x 132 x 45 mm
- Power supply 24 VDC



## smmx.tp7

smmx with integrated 7" colour touch panel

- Resolution 1280 x 800 px
- Display area 150 x 93 mm
- Capacitive touchscreen
- Aluminium housing with all-glass front for front panel mounting
- Dimensions 208 x 134 x 55 mm
- Power supply 24 VDC



## smmx.tp10

smmx with integrated 10" colour touchscreen

- Resolution 1280 x 800 px
- Display area 216 x 135 mm
- Capacitive touchscreen
- Aluminium housing with all-glass front for front panel mounting
- Dimensions 264 x 184 x 49 mm
- Power supply 24 VDC



Other models are available upon request. We are flexible in terms of display size, housing material and shape.



### smmx.tp13

smmx with integrated 13.3" colour touch panel

- Resolution 1366 x 768 px
- Display area 294 x 168 mm
- Capacitive touchscreen
- Aluminium housing with all-glass front for front panel mounting
- Dimensions 345 x 283 x 61 mm
- Power supply 24 VDC



### smmx.tp15

smmx with integrated 15.6" colour touchscreen

- Resolution 1366 x 768 px
- Display area 345 x 195 mm
- Capacitive touchscreen
- Aluminium housing with all-glass front for front panel mounting
- Dimensions 400 x 258 x 50 mm
- Power supply 24 VDC



### smmx.4x11/3/320R in 19" - Rack

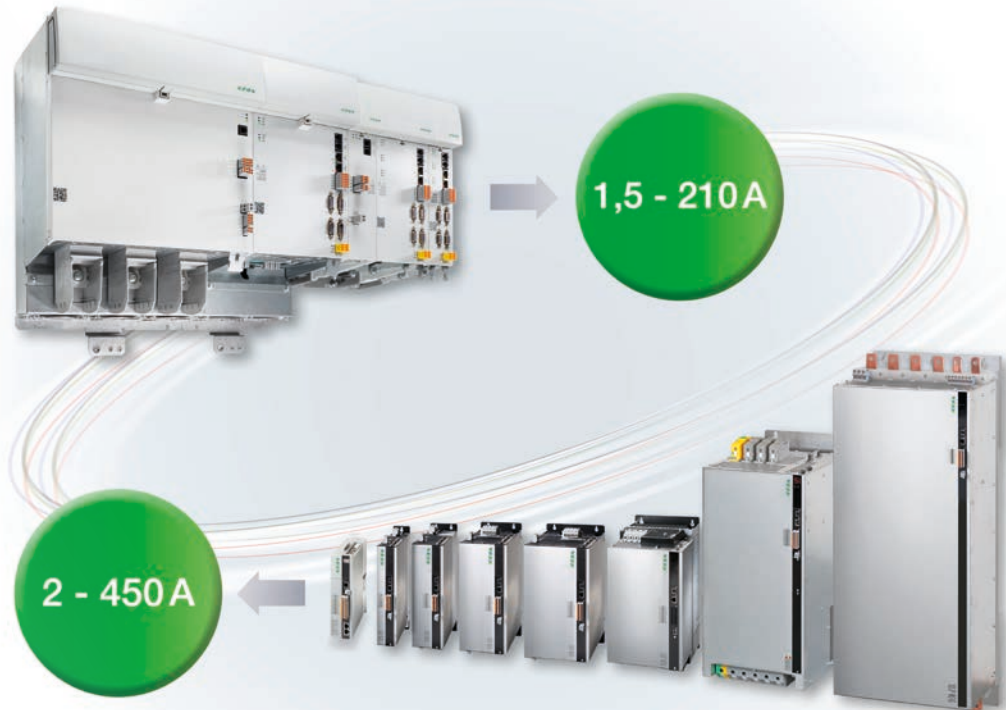
- Up to 4 integrated digital AC servo or step motor amplifiers
- Integrated 7" colour touch panel (resolution 800 x 480 px)
- Integrated emergency stop relay
- Inputs and outputs optionally on 37-pin SUB-D plug or on external EtherCAT terminals
- USB and Ethernet connection
- 19" steel housing
- Power supply 230VAC

Models



# Strong Partnership KEBA

When it comes to servo drive technology, we rely on our strong partner – a partner we have worked with hand in hand for many years, ensuring your best automation solution!



## Impressive highlights

Our drive systems are the basis for performance, productivity and safety of your machine. The modularity and the wide range of products and services guarantee you optimal and fast integration into the machine automation at any time.

- Energy-efficient multi-axis systems  
(230 – 480 V AC with 1.5 A – 450 A)
- Flexible single-axis systems  
(24 V DC – 480 V AC with 2 A – 450 A)
- Industry-specific variants and systems
- Scalable safe motion solutions  
according to PLe/SIL3





## Drive components – Motors and power amplifiers



### Single cable solution

- With just one cable to the servomotor
- Less hardware and fewer connections
- Faster installation
- Space-saving, lower in weight & reduced inventory costs
- Cost-effective & reliable



### Motors

- Compact and space-saving
- High energy efficiency, power density and reliability
- Finely graduated rotational speed and torque ranges precisely designed for the respective application

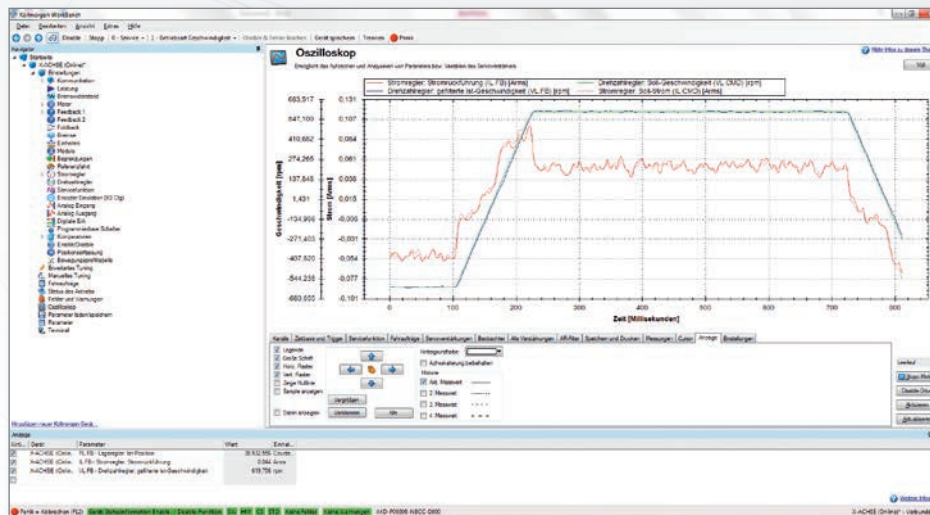


### Step motor amplifier

- Extremely compact power amplifier for 2-phase step motors
- Motor current range: 1.5 A – 8 A
- Motor voltage range: 24 V – 48 V
- Adjustable number of steps up to 10,000 steps/motor revolution
- EtherCAT Interface

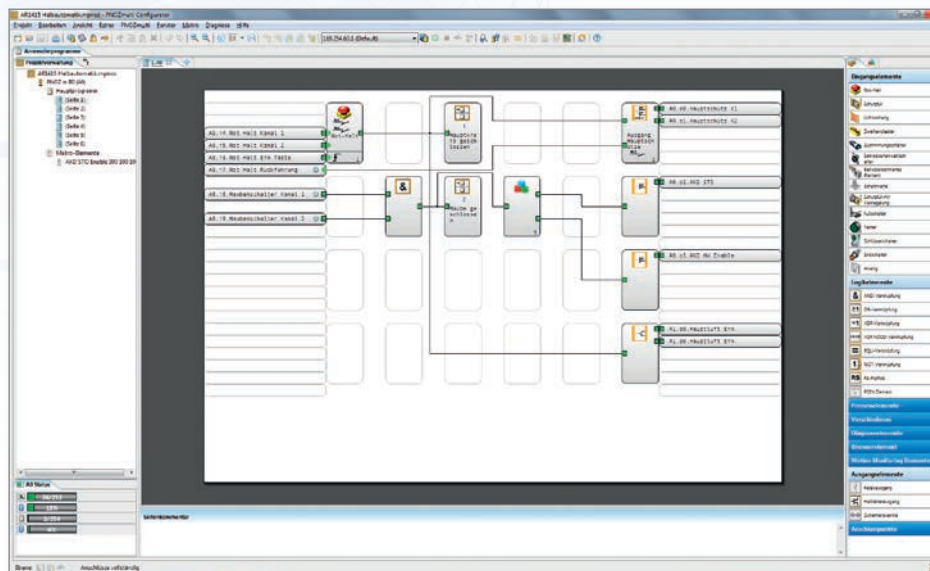
# Customised Software – flexible function blocks, intuitive operation

Our leading-edge software tools cover all areas of industrial automation technology. Complex individual requirements can be implemented with a simple system solution. Upon request, we can undertake the complete software development and provide a turnkey application.



## Commissioning of Electrical Drives

The ergonomic user interface makes working with the drive simple.

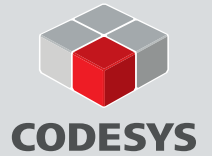


## Safety Configuration

The PNOZ multi configurator is used to develop safety circuits for PILZ safety devices.

# PLC Configuration

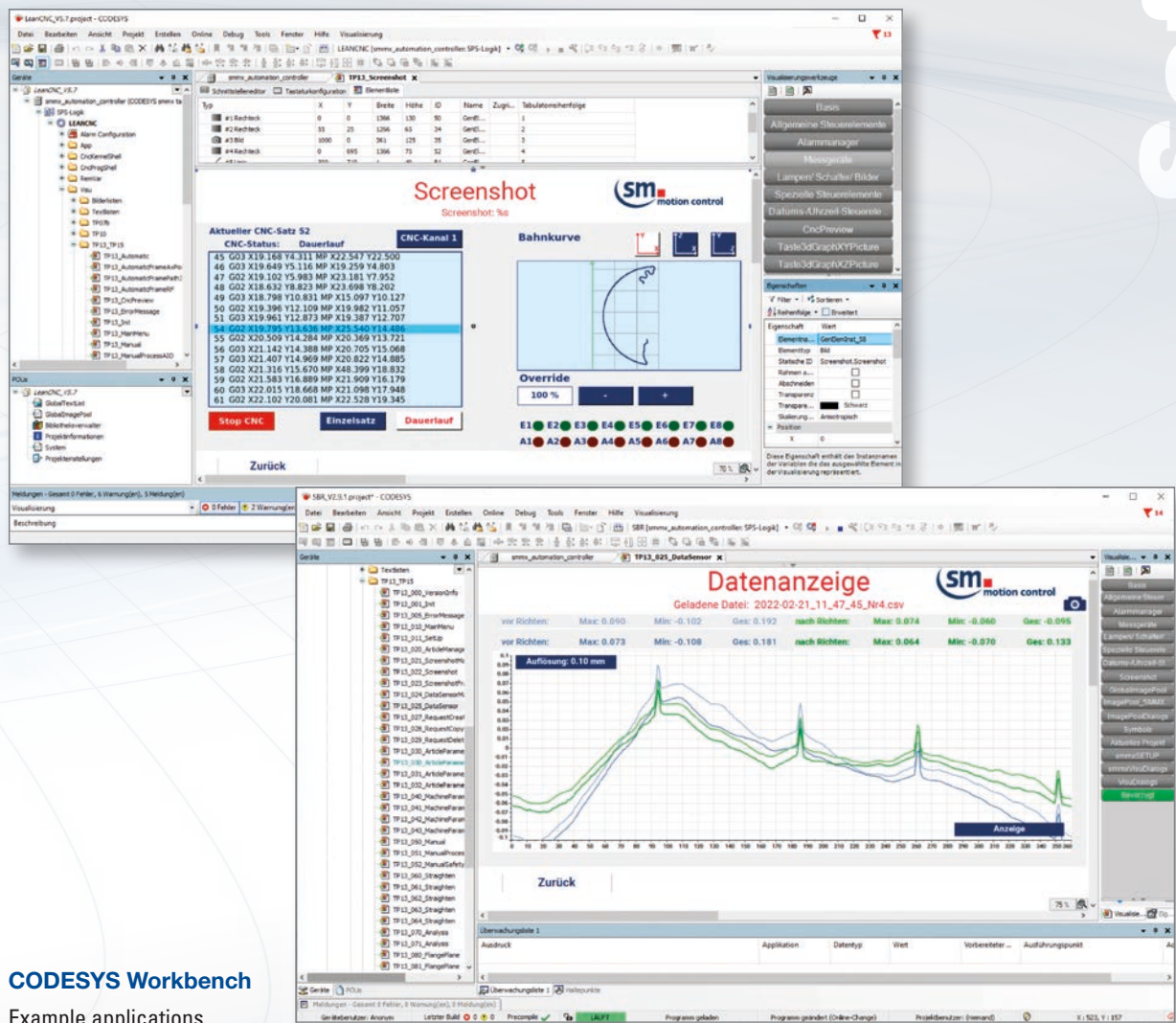
**CODESYS V3 – the comprehensive software suite for automation technology**



CODESYS is a software platform for numerous tasks in industrial automation technology. It is based on the IEC 61131-3 programming tool CODESYS development system.

- Programming
- Configuration of field bus and I/Os
- Visualisation
- Motion Control
- Diagnostics and Debugging
- Remote access

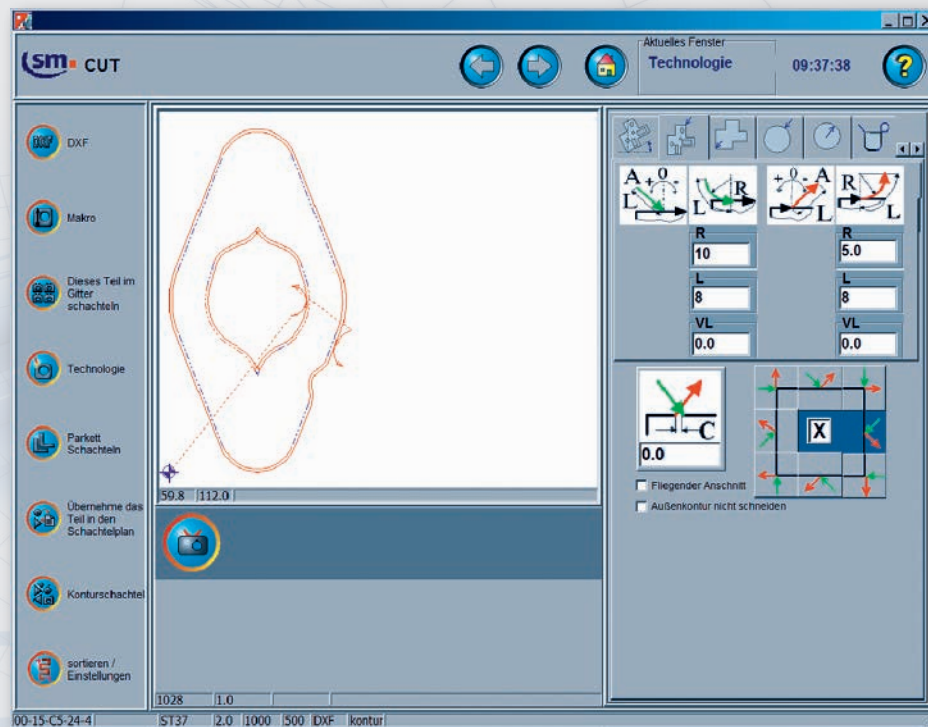
Software





# smCut – CAD/CAM System

smCut is a CAD/CAM system featuring a wide range of functions, it is easy to use and offers an outstanding cost-performance ratio. With just a few clicks, it is possible to convert CAD drawings into CNC programs and download them to the smmx controller.



- Import various formats, such as DXF and DWG
- DXF analyser for modifications or repairs (e.g. closing open contours).
- 50 parameterisable macros – easy to edit and save as DXF file
- Setting the ingate for each individual part with inner and outer contours

Software

# Systems

## System Solutions

We provide turnkey system solutions with the following services/components:

- Configuration, consultation, drive system design
- Control cabinet/ electrical engineering
- Positioning systems/ mechanical design
- Control and drive technology
- Software development including operational concept
- Commissioning at our site or at your facilities



Solutions



## Customized electronic devices

Share your ideas with us in confidence. In addition to the services above, we also offer:

- Hardware and circuit board development
- Housing design
- Wiring/assembly/final inspection



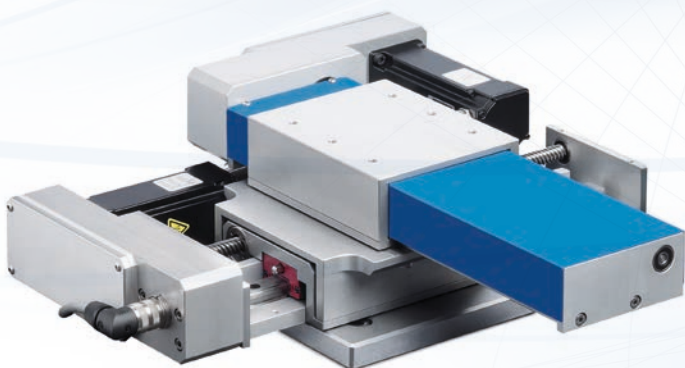
# Retrofit of Machines

We can retrofit your old systems using the most advanced control, drive and control cabinet technology.



## Positioning Systems

Together with our business partners, we develop complete positioning systems. Mechanics + Drive Technology + Controllers.



### We offer the following mechanical components

- Aluminium profile linear axes with roller guides and geared belt drive (40 – 90 mm profile sizes)
- Aluminium profile linear axes with roller guides and ball screw (30 – 200 mm bed widths)
- Linear guides for precision machinery (steel or grey cast iron structures with integrated precision guides and drives)
- Rotary tables
- Multi-axis systems
- Absolute scales



## HMI - Operating and Monitoring

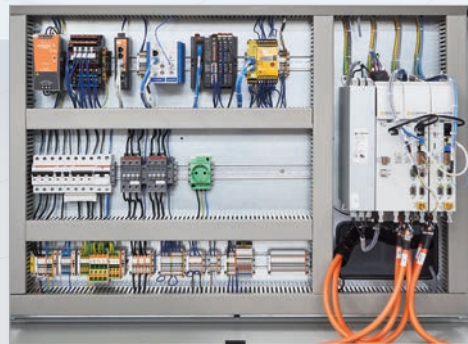
We offer a large selection of mobile and stationary operator panels – ready-made or customized.



## Customized Control Cabinets

**Your application needs – We make them happen**

We manufacture the control cabinet to fit your exact application needs, including wiring diagrams and complete documentation



Our highly qualified employees use cutting-edge technology both in the design software and when selecting components.

# Control Automate Implement



sm motion control gmbh  
Phone +49 (0)7720/8504-0  
Fax +49 (0)7720/8504-99  
Dickenhardtstraße 39  
D-78054 Villingen-Schwenningen  
mail@smmotioncontrol.de  
www.smmotioncontrol.de

